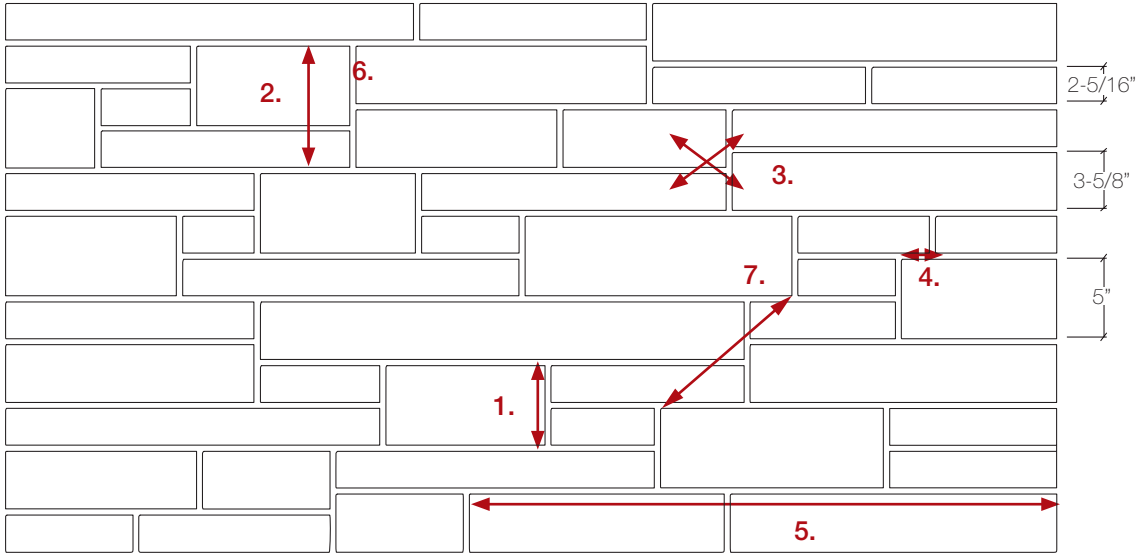


# Urban LedgeStone Building Stone

Typical Elevation • 20:50:30 Ashlar Bond • 3/8" Mortar Joints



## Guidelines for Installation:

1. Two UL22 units load on top of each other will bond with one UL50.
2. A UL22/UL50 combination will bond with two UL35s.
3. UL35 units should form a staggered bonding line by crossing with UL22s.
4. Maintain a minimum 4" between vertical joints.
5. Maintain a maximum 5 – 7 foot horizontal joint length.
6. Maximum vertical joint is the height of the tallest unit.
7. To maintain the standard ratio of sizes in the wall, UL50 units should be placed approximately 1 - 1-1/2' apart. UL50 units should not touch each other.

## Avoid:

- Stepping or stringing together more than 2 - 3 units of the same height.
- Creating box patterns in the wall.
- Stack bonding.

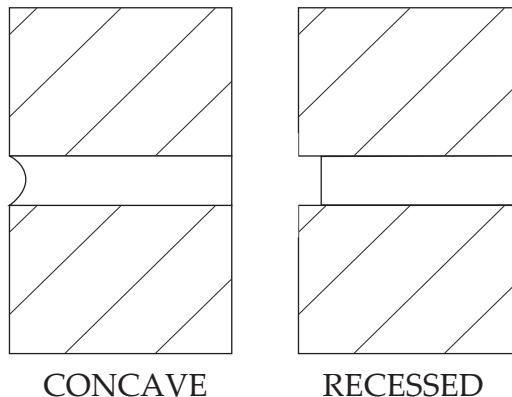
Size	Percent	Pieces/ sq.ft	Nominal Length of one Piece
UL22	20	11	31-3/4"
UL35	50	19	31-3/4"
UL50	30	8	32"

\*One piece of Building Stone may be comprised of 2 or more pieces.

# General Installation Guidelines

- Arriscraft recommends the use of a Portland cement-lime mortar, proportioned to a 1:1:6 ratio.
- Masonry units should be laid with full head and bed joints except where they are used for weep holes or ventilation.
- Bevel mortar from rear face to prevent protrusion into cavity.
- Prevent excessive mortar droppings by cutting off excess mortar with trowel as the units are laid.
- Butter head joints of unit being placed in wall.
- Place unit to tightly compress mortar.
- Do not re-adjust unit once it has been set in place.
- Tool joints when mortar is thumbprint hard. This timing will depend on the mortar properties and weather conditions.
- Tool joints to a tightly compressed surface to achieve the most weather resistance. Concave tooled joints provide the best resistance to moisture penetration.
- After tooling, any excess mortar and dust should be brushed from the masonry surface using a soft bristle brush. Avoid rubbing or pressing the mortar into the units.
- Refer to additional guidelines on the BASIC CARE sheet.

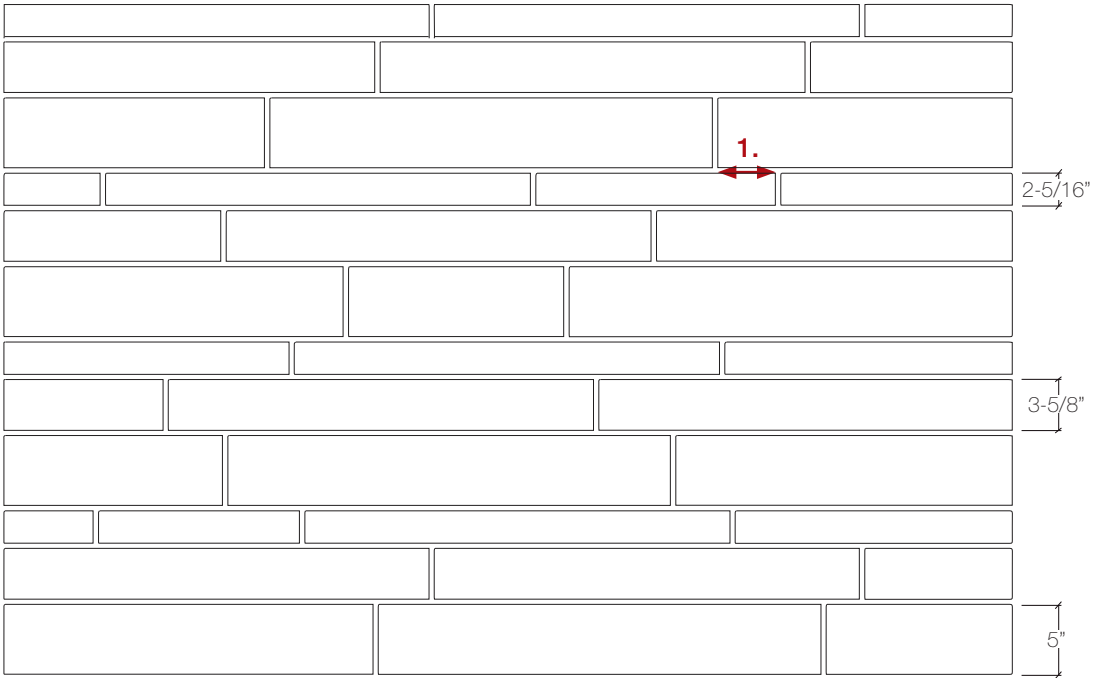
## Joint Profile:



October 2016

# Urban Ledgestone Building Stone

Typical Elevation • 20:30:50 Coursed Bond • 3/8" Mortar Joints



## Guidelines for Installation:

1. Minimum 4" overlap of vertical joints.
2. To maintain consistency of appearance, mix small and large units.

## Avoid:

- Stepping or stringing together more than 2 - 3 units of the same height.
- Creating box patterns in the wall.
- Stack bonding.

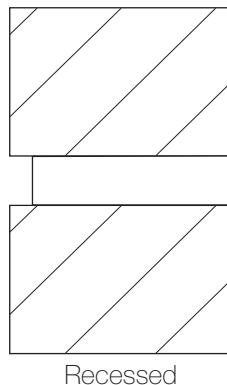
Size	Percent	Pieces/ sq.ft	Nominal Length of one Piece
UL22	20	11	31-3/4"
UL35	30	19	31-3/4"
UL50	50	8	32"

\*One piece of Building Stone may be comprised of 2 or more pieces.

# General Installation Guidelines

- Arriscraft recommends the use of a Portland cement-lime mortar, proportioned to a 1:1:6 ratio.
- Masonry units should be laid with full head and bed joints except where they are used for weep holes or ventilation.
- Bevel mortar from rear face to prevent protrusion into cavity.
- Prevent excessive mortar droppings by cutting off excess mortar with trowel as the units are laid.
- Butter head joints of unit being placed in wall.
- Place unit to tightly compress mortar.
- Do not re-adjust unit once it has been set in place.
- Tool joints when mortar is thumbprint hard. This timing will depend on the mortar properties and weather conditions.
- Tool joints to a tightly compressed surface to achieve the most weather resistance. Concave tooled joints provide the best resistance to moisture penetration.
- After tooling, any excess mortar and dust should be brushed from the masonry surface using a soft bristle brush. Avoid rubbing or pressing the mortar into the units.
- Refer to additional guidelines on the BASIC CARE sheet.

Joint Profile:



October 2016