

1/2" x 8" BEVEL TO MAINTAIN CONSISTENT SLOOPE AND LINE

3 1/2" MIN.

#15 ROOFING FELT OVER EDGES OF 2x12 CAP

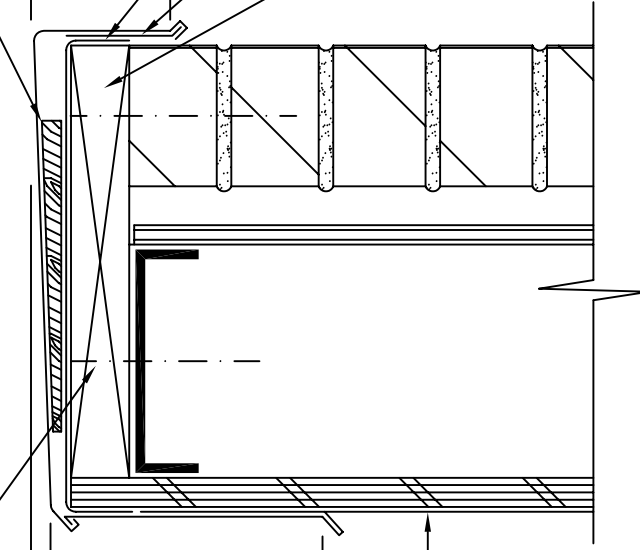
CAP FLASHING. SECURE TO 2x12

2x12 CAP

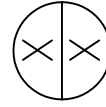
2x12 TO BE SECURED TO BRICK AND STEEL STUD

7" MIN. 1/2"

BASE FLASHING



FLASHING AT PARAPET



3" = 1'-0"

THE DETAILS AND DATA CONTAINED IN THIS LITERATURE ARE FOR INFORMATION ONLY. ALL DESIGNS AND DETAILS USED IN CONSTRUCTION MUST BE REVIEWED, APPROVED AND SEALED BY A REGISTERED PROFESSIONAL ENGINEER. NO WARRANTIES (EXPRESS, IMPLIED OR STATUTORY) ARE MADE IN CONNECTION WITH THE STRUCTURAL DETAILS AND DATA CONTAINED HEREIN.

FLASHING AT PARAPET

DATE: 07/23/03

SCALE: NTS