



shown in photo
THIN BRICK NAME : Peppermill



shown in photo
THIN BRICK NAME : Ironworks



shown in photo
THIN BRICK NAME : Peppermill

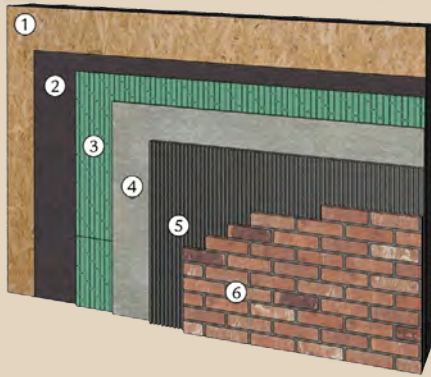
OLD BRICK ORIGINALS™ THIN BRICK
INSTALLS EVERYWHERE. CHANGES EVERYTHING.



Installation

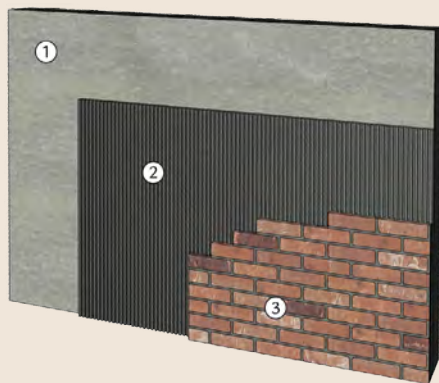
The General Shale preferred method of exterior installation is a drainage system with polymer modified mortar. This system is a revolutionary moisture barrier that protects exterior substrate walls when thin brick is used. Thin, lightweight and easy to install, this system also provides an additional layer of insulation for your home.

EXTERIOR INSTALLATION METHOD



- 1 RIGID SUBSTRATE
- 2 WEATHER BARRIER
- 3 DRAINAGE MEDIUM
- 4 CEMENT BOARD
- 5 THINSET
- 6 THINBRICK AND GROUT

INTERIOR INSTALLATION METHOD



- 1 DRYWALL OR CEMENT BOARD
- 2 THIN-SET MORTAR OR ADHESIVE*
- 3 THINBRICK AND GROUT

*Non-sagging adhesive recommended. Visit our website for more thin brick installation details.



shown in photo
THIN ROCK NAME: Peppermill



shown in photo
THIN BRICK NAME: Smokestack

OLD BRICK ORIGINALS™

THIN BRICK

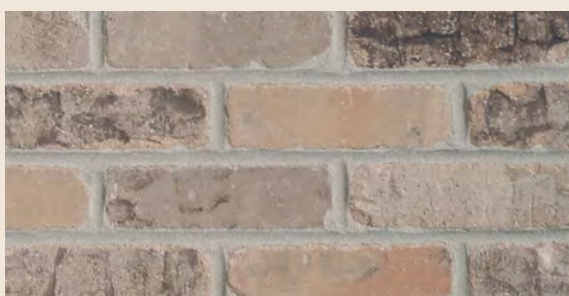
STANDARD COLORS



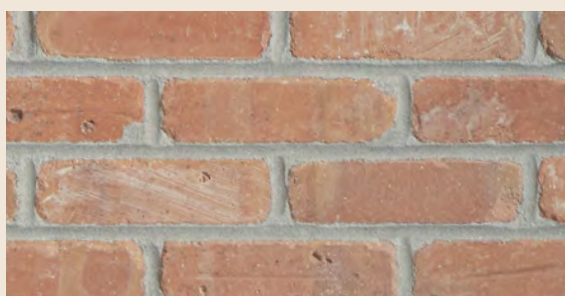
Carriagehouse



Cigarfactory



Ironworks



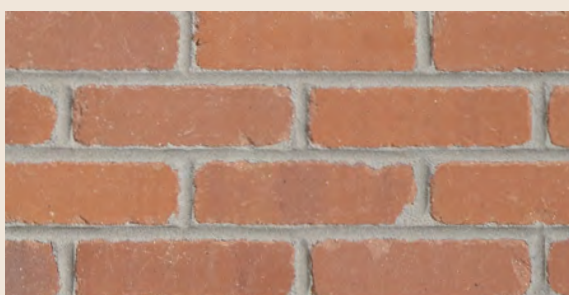
Operahouse



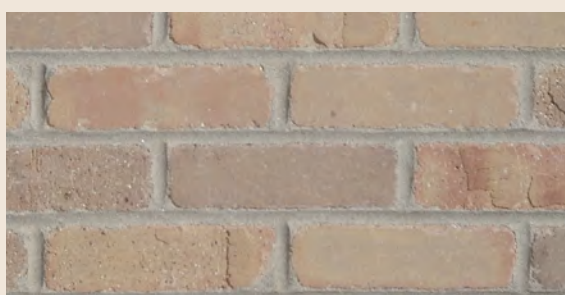
Smokestack



Towerbridge



Frenchquarter



Seawall

Product availability may vary by geographic location. Please visit your local General Shale retail location or contact your local General Shale representative for product availability. Please visit www.GeneralShale.com to find the location nearest you.

OLD BRICK ORIGINALS™

THIN BRICK

STANDARD COLORS



Cityhall



Englishpub



Peppermill



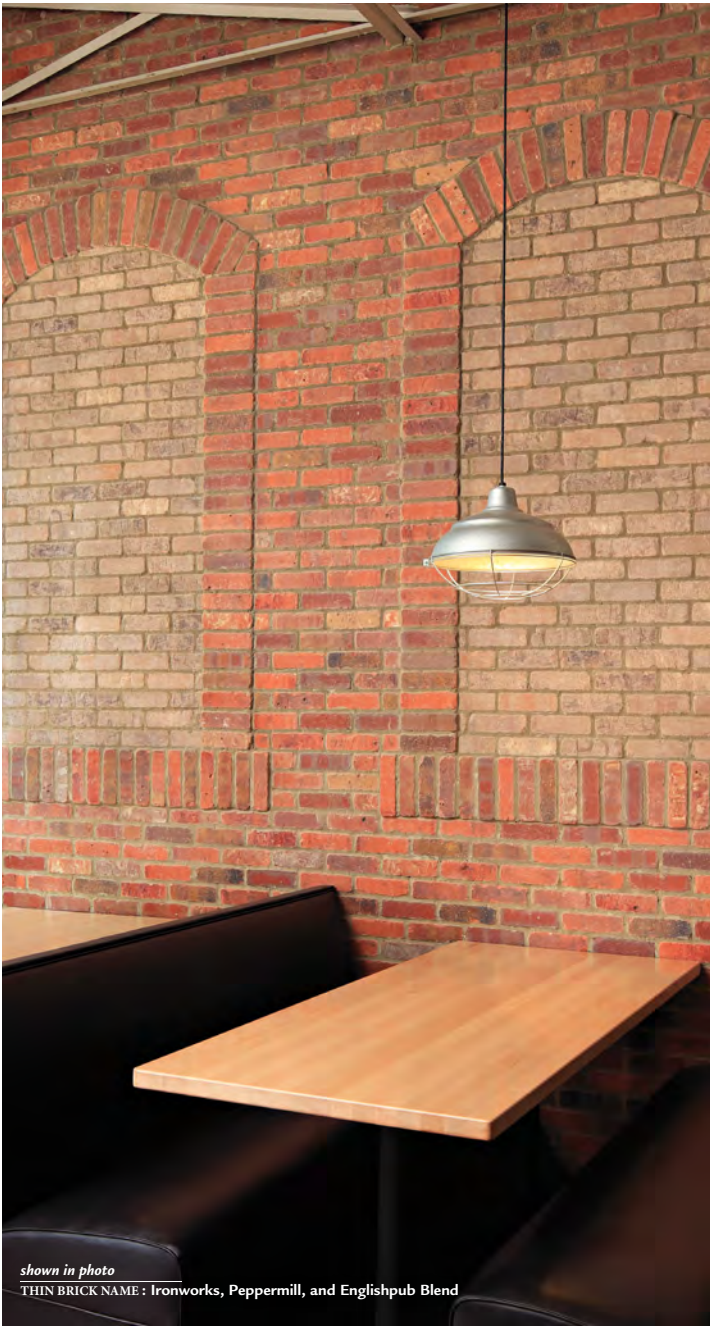
Schoolhouse



Townsquare



Trainstation



shown in photo
THIN BRICK NAME : Ironworks, Peppermill, and Englishpub Blend



shown in photo
THIN BRICK NAME : Schoolhouse



shown in photo
THIN BRICK NAME : Seawall



shown in photos
THIN BRICK NAME : Ironworks



shown in photo
 THIN BRICK NAME: Townsquare



General Shale
1-800-414-4661
www.GeneralShale.com



General Shale masonry products are an integral part of a systems solution for sustainable construction. From highly efficient and environmentally friendly production to extremely long product life cycles, General Shale products can benefit both the environment and the building's occupants.



Our company has a long history of responsible stewardship of the environment and has received numerous awards for our conservationist accomplishments. We are proud of leading the masonry products industry with innovative processes while providing the world's best building materials for customers across North America.



Copyright © 2013 General Shale, Inc. The photos in this brochure are intended to represent general color range and texture. Precise color fidelity is difficult to obtain in print. Color selection should be made from product samples.