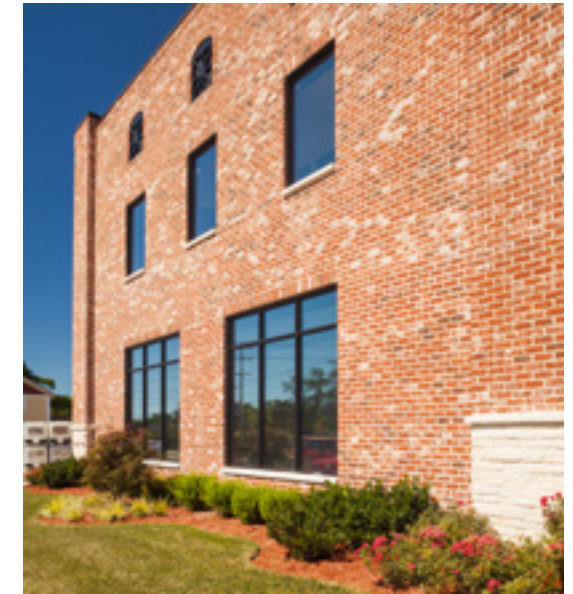




Brick name: Olde Georgian Tudor

COMMERCIAL BRICK



Brick Product: Olde Georgian Tudor

This photo sample is intended to represent general color range and texture. Precise color fidelity is difficult to obtain in print. Brick selection should be made from product samples.





Thin Brick Product: Smokestack

This photo sample is intended to represent general color range and texture. Precise color fidelity is difficult to obtain in print. Brick selection should be made from product samples.



Brick Product: Autumn Leaf & Cambridge

This photo sample is intended to represent general color range and texture. Precise color fidelity is difficult to obtain in print. Brick selection should be made from product samples.

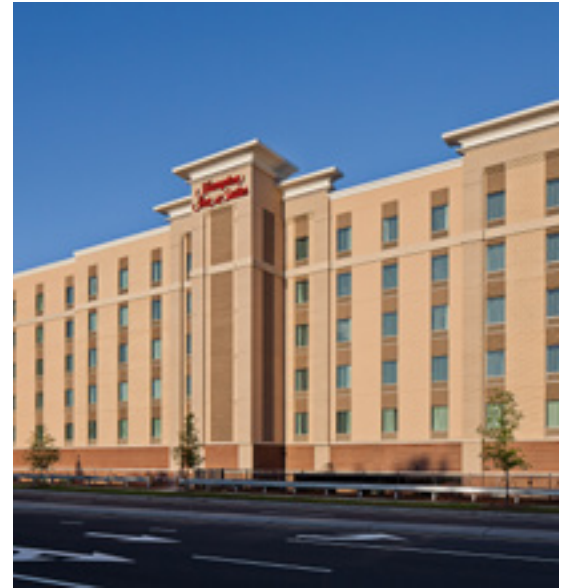
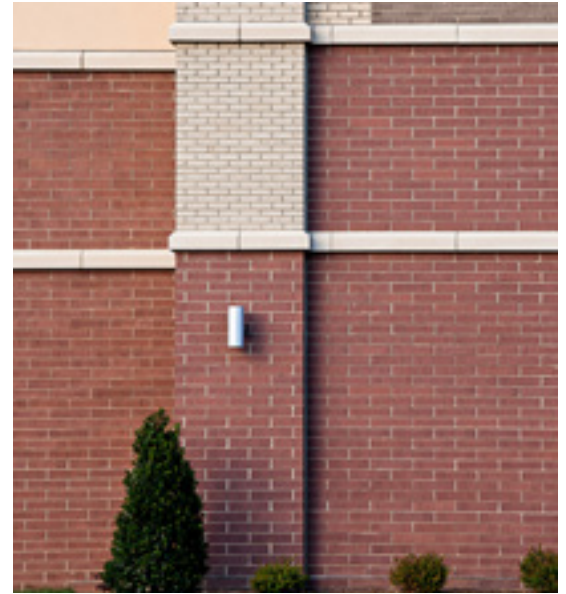




Brick Product: Buckingham Tudor & Fort McHenry

This photo sample is intended to represent general color range and texture. Precise color fidelity is difficult to obtain in print. Brick selection should be made from product samples.





Brick Product: Smoked Gray Velour, Silverstone Velour, Oatmeal Velour

This photo sample is intended to represent general color range and texture. Precise color fidelity is difficult to obtain in print. Brick selection should be made from product samples.

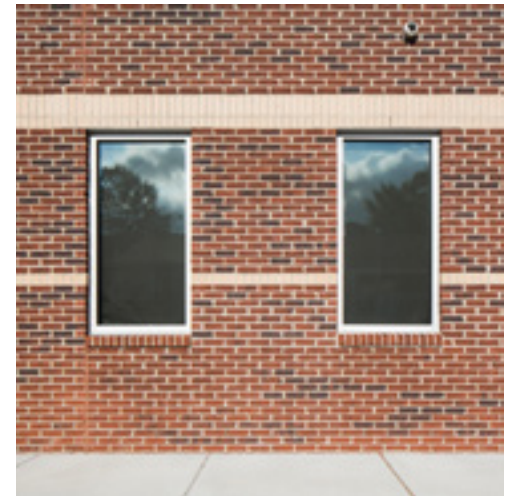




Brick Product: Raleigh Court

This photo sample is intended to represent general color range and texture. Precise color fidelity is difficult to obtain in print. Brick selection should be made from product samples.

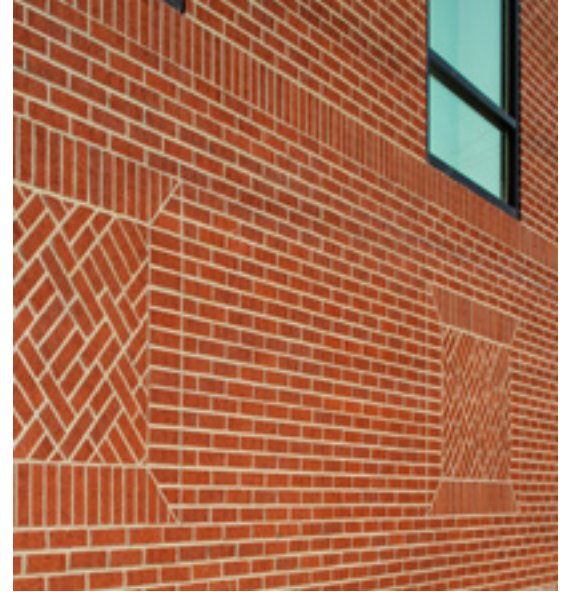




Thin Brick Product: Jefferson Wade Tudor

This photo sample is intended to represent general color range and texture. Precise color fidelity is difficult to obtain in print. Brick selection should be made from product samples.

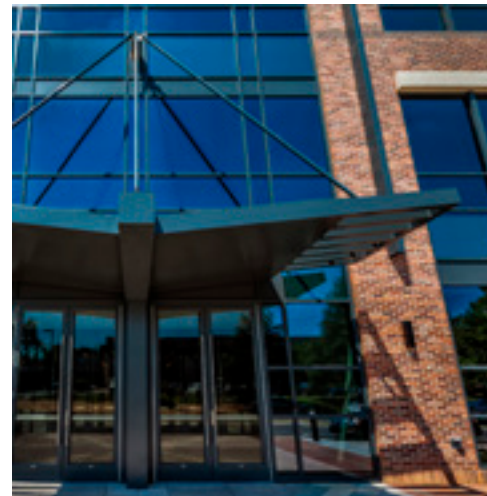




Brick Products: Red Centennial & Coliseum

This photo sample is intended to represent general color range and texture. Precise color fidelity is difficult to obtain in print. Brick selection should be made from product samples.





Thin Brick Product: Englishpub

This photo sample is intended to represent general color range and texture. Precise color fidelity is difficult to obtain in print. Brick selection should be made from product samples.





Thin Brick Product: Englishpub

This photo sample is intended to represent general color range and texture. Precise color fidelity is difficult to obtain in print. Brick selection should be made from product samples.





Brick Product: Lee Blend

This photo sample is intended to represent general color range and texture. Precise color fidelity is difficult to obtain in print. Brick selection should be made from product samples.

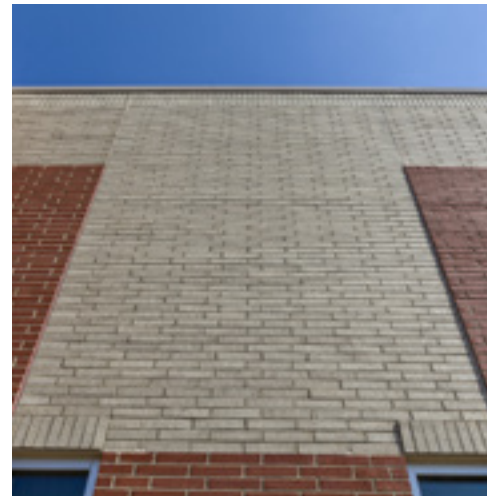

General Shale



Brick Product: Buckingham Tudor & Marley Tudor

This photo sample is intended to represent general color range and texture. Precise color fidelity is difficult to obtain in print. Brick selection should be made from product samples.

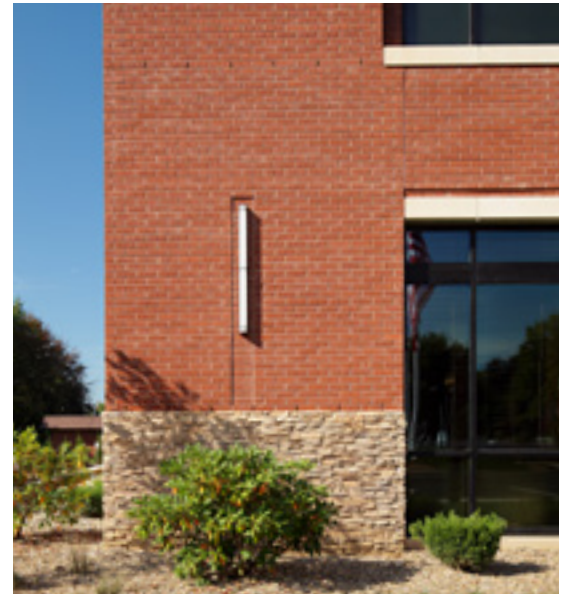
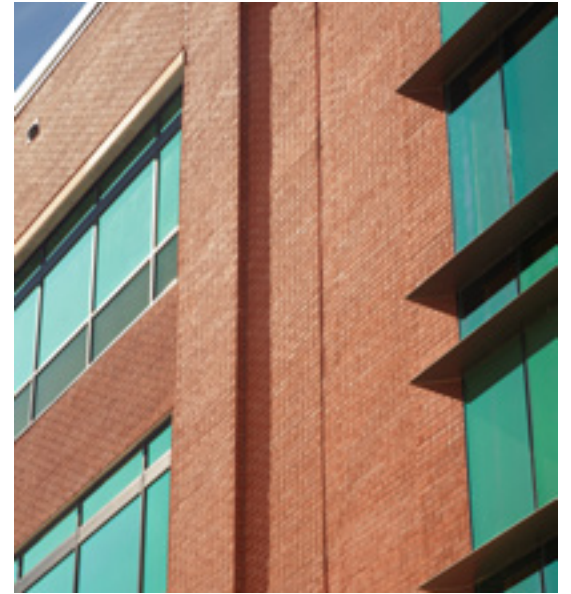




Brick Product: Red Velour & Graystone Velour

This photo sample is intended to represent general color range and texture. Precise color fidelity is difficult to obtain in print. Brick selection should be made from product samples.

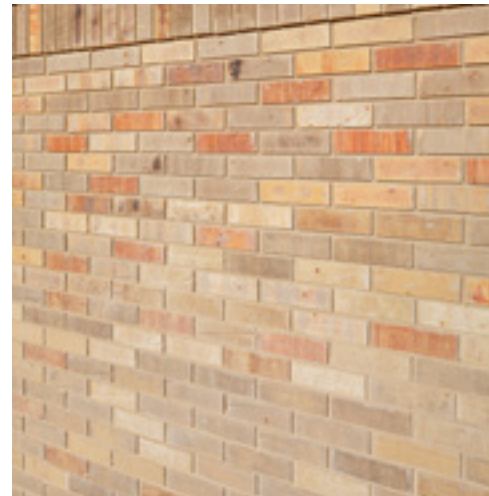




Brick Product: Red Range Wirecut & Red Centennial

This photo sample is intended to represent general color range and texture. Precise color fidelity is difficult to obtain in print. Brick selection should be made from product samples.





Brick Product: Charleston

This photo sample is intended to represent general color range and texture. Precise color fidelity is difficult to obtain in print. Brick selection should be made from product samples.



RETAIL LOCATIONS

COLORADO

1845 West Dartmouth Avenue
Denver, CO 80110
(303) 783-3000

2216 Airway
Ft. Collins, CO 80524
(970) 484-1292

GEORGIA

121 Turner Bend Road SW
Rome, GA 30165
(877) 556-0009

ILLINOIS

Chicago (South)
16109 108th Avenue
Orland Park, IL 60467
(708) 460-4581

Chicago (West)
1975 Aucutt Road
Montgomery, IL 60538
(630) 897-7922

INDIANA

105 Carmel Drive West
Carmel, IN 46032
(317) 846-2566

3401 Mt. Vernon Avenue
Evansville, IN 47712
(812) 425-3381

148 Sycamore Lane
Mooresville, IN 46158
(317) 831-4614

KENTUCKY

307 Peterson Drive
Elizabethtown, KY 42701
(270) 765-2116

211 N. English Station Road
Louisville, KY 40223
(502) 448-1780

MICHIGAN

42374 Mound Road
Sterling Heights, MI 48314
(586) 726-0400

6556 Whitmore Lake Road
Whitmore Lake, MI 48189
(734) 665-8800

MONTANA

531 Sugar Avenue
Billings, MT 59101
(406) 259-9222

NORTH CAROLINA

10800 Reames Road
Charlotte, NC 28269
(704) 599-2877

1060-A Highway 66 South
Kernersville, NC 27284
(336) 993-0882

245 Brick Plant Road
Moncure, NC 27559
(919) 777-6899

8820 Westgate Park Drive
Raleigh, NC 27617
(919) 828-0541

2507 Jefferson Davis Highway
Sanford, NC 27332
(919) 775-2121

3750 Highway 421 North
Wilmington, NC 28401
(910) 452-3498

SOUTH CAROLINA

425 Oak Road
Piedmont, SC 29763
(864) 603-1160

TENNESSEE

7833 Lee Highway
Chattanooga, TN 37421
(423) 485-1260

400 Wittichen Lane
Humboldt, TN 38343
(731) 824-5272

3015 Bristol Highway
Johnson City, TN 37601
(423) 282-4661

925 East Stone Drive
Kingsport, TN 37660
(423) 245-6131

9714 Parkside Drive
Knoxville, TN 37922
(865) 531-6203

605 Morrison Street
McMinnville, TN 37110
(931) 473-2139

2076 Whitten Road
Memphis, TN 38133
(901) 363-1887

909 Mountain View Drive
Piney Flats, TN 37686
(423) 538-3332

241 Hoyal Lane
Spring City, TN 37381
(423) 365-2444

VIRGINIA

7500 Mason King Court
Manassas, VA 20109
(703) 368-9991

WYOMING

1615 East Yellowstone
Highway
Casper, WY 82601
(307) 234-4831



General Shale masonry products are an integral part of a systems solution for sustainable construction. From highly efficient and environmentally friendly production to extremely long product life cycles, General Shale products can benefit both the environment and the building's occupants.

Our company has a long history of responsible stewardship of the environment and has received numerous awards for our conservationist accomplishments. We are proud of leading the masonry products industry with innovative processes while providing the world's best building materials for customers across North America.

wienerberger

Copyright © 2017 General Shale, Inc. The photos in this brochure are intended to represent general color range and texture. Precise color fidelity is difficult to obtain in print. Color selection should be made from product samples.