

THIN VENEER

(Thin Brick Veneer)

INTERIOR INSTALLATION GUIDE USING THE 
'LATICRETE® MVIS™ SYSTEM'
Laticrete 15 year Product Warranty

Step 1: (Framed Installation) Install Cement Board

Install Perma Base cement board by National Gypsum (or equal) as per manufacturer's instructions.

Step 1: (Masonry Wall Installation) Inspect Wall

Inspect concrete block and insure wall is clean of any dust, laitance, loose material and any excess film that could impede bond.

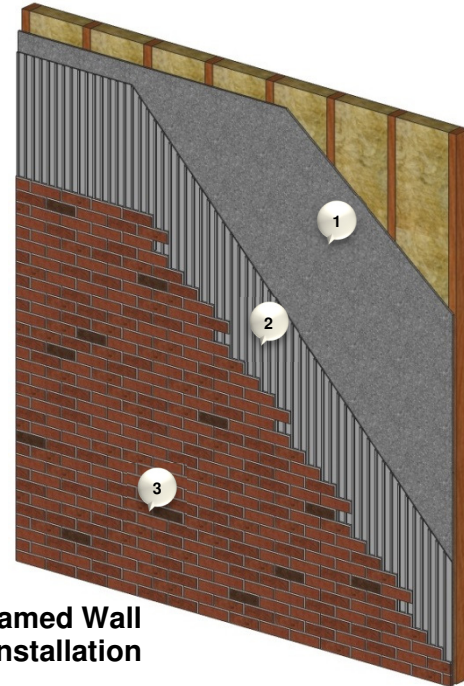
Step 2: Apply Polymer Modified Thin-Set Mortar

Using a trowel, spread [Laticrete Thin Brick Mortar](#) across substrate in an upwards direction with the flat side of the trowel. Run notched side of the trowel across mortar to create a grooved finish. Apply only a workable area of mortar that will allow veneer to be properly set before surface drying occurs. This area will vary depending on site environmental conditions.

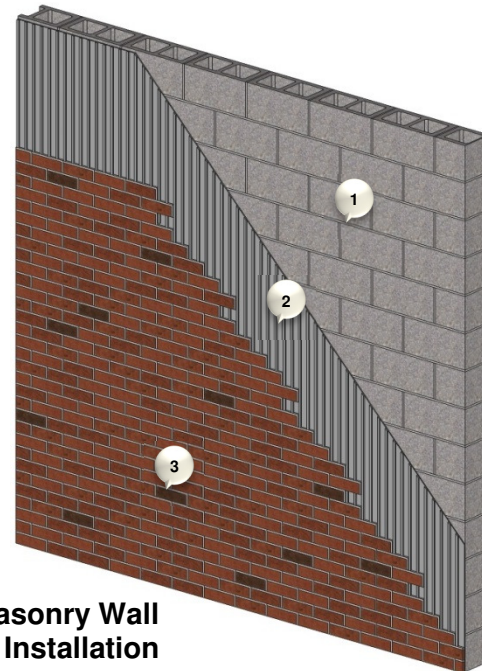
NOTE: Do not substitute Laticrete with any other product or material.

Step 3: Install Thin Brick Veneer Units

Clean unit backs of any dust, laitance, loose material and any excess film that could impede bond. With a trowel "back-butter" the veneer units, if required to fill any surface irregularities or to ensure 100% coverage. Beginning with the corner pieces, work either from the top-down, or bottom-up. Press the corner piece onto the wall, rotating back and forth slightly, and forcing some of the mortar to "squeeze out". Remove this excess mortar with a square flat trowel and use the excess on the next piece of veneer. Remove excess mortar from around or on the veneer units with a stiff brush. Check for 100% mortar coverage by removing two stone units from the wall per bag of mortar used. Grout the joints using [Laticrete Pointing Mortar](#) using a grout bag. Tool joints when thumbprint hard using a metal jointing tool.



Framed Wall Installation



Masonry Wall Installation

Additional Information

1. As building codes vary by region, it is important to check local building codes for proper installation guidelines.
2. This Installation Guide serves as reference only and is not meant to act as a substitute for professional advice.
3. Considerations must be made for hot & cold weather construction. For additional information on hot & cold weather construction, refer to TMS 602-11/ACI 530.1-11/ASCE 6-11, Specification for Masonry Structures, Sections 1.8C and 1.8D.